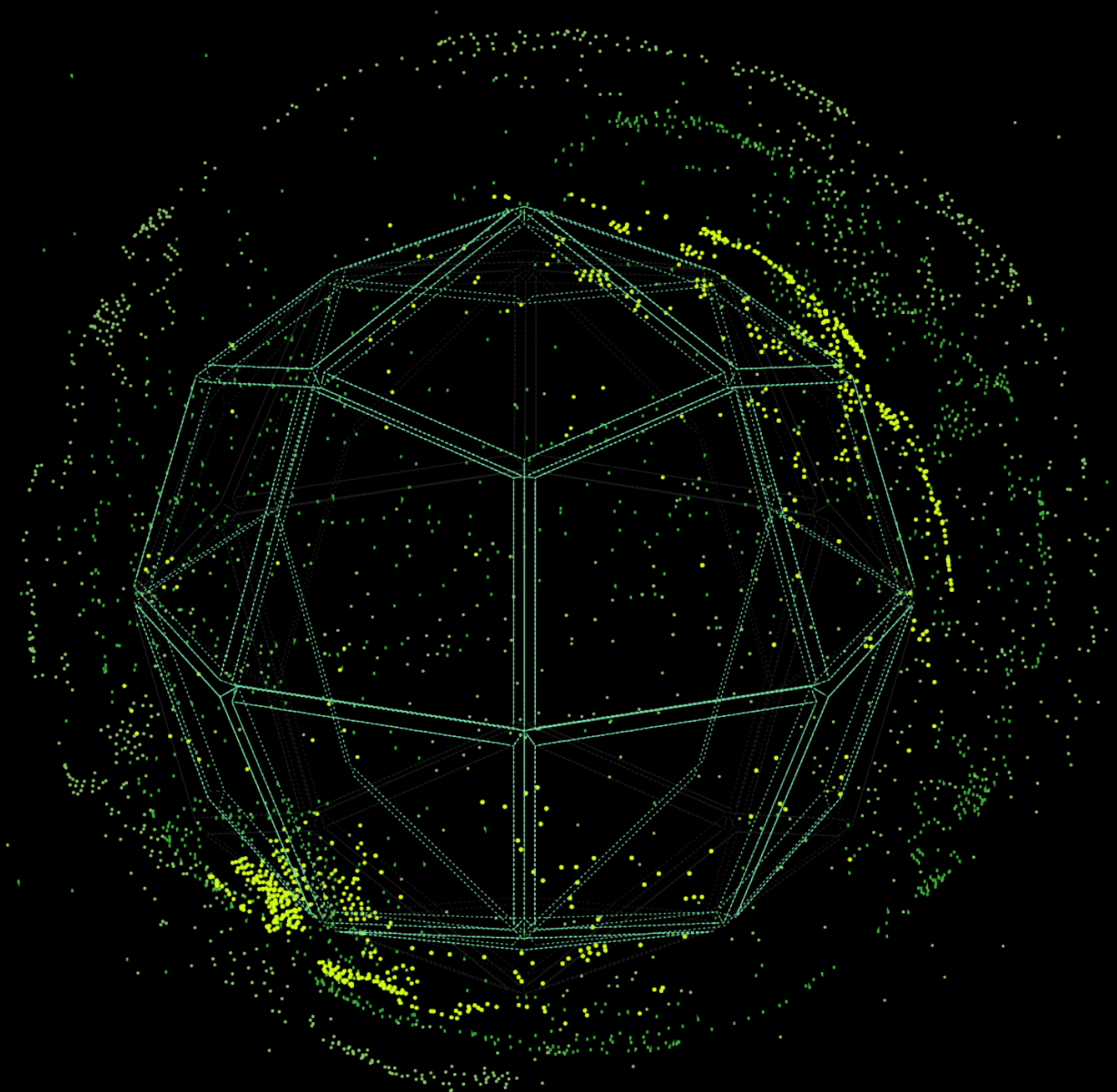




EXPERIENCE YOUR NETWORK IN
A WHOLE NEW DIMENSION



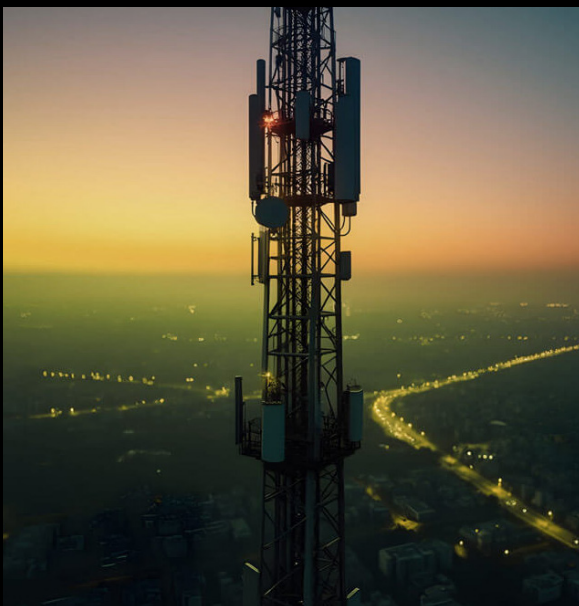
Enabling Humanity to Solve the World's Hardest Problems in Real-Time
by Converging the Physical and Digital Worlds



REAL-TIME DECISION ADVANTAGE

In today's telecommunications landscape, executives must navigate complex networks while facing intense pressure to optimize performance and reduce costs. Network operations require sophisticated management of infrastructure, from maintenance scheduling to equipment procurement, all while maintaining rigorous service levels. The telecommunications industry's unique technology stack demands precise monitoring of assets, resource allocation, and service quality metrics. Without advanced analytical capabilities, carriers struggle to strike a balance between network reliability and operational efficiency.

The telecommunications sector's traditional management systems face fundamental limitations in handling complex operational data. While providers collect extensive performance metrics across their networks, legacy solutions cannot effectively synthesize information from infrastructure monitoring, resource utilization, and maintenance systems. Current tools fall short in predictive modeling and strategic planning, particularly when evaluating infrastructure investments against aggressive cost constraints. This fragmented approach hampers telecommunications companies' ability to maximize asset value, optimize operational costs, and maintain service excellence while preparing for future market scenarios.



1 NETWORK PERFORMANCE

Managing performance across complex multi-vendor networks while maintaining service levels becomes increasingly challenging as cost reduction pressures mount. Organizations face pressure to reduce operational costs while maintaining or improving network quality. Traditional monitoring tools provide fragmented views that limit optimization opportunities and make efficient resource allocation difficult.

2 OPERATING COSTS

Management: Increasing pressure to reduce operational expenses while maintaining network quality creates complex optimization challenges. Organizations must identify opportunities for efficiency across maintenance, energy consumption, and workforce deployment. Traditional cost management approaches struggle to balance service quality requirements against aggressive cost reduction targets driven by market pressures and exit expectations.

3 INFRASTRUCTURE PLANNING

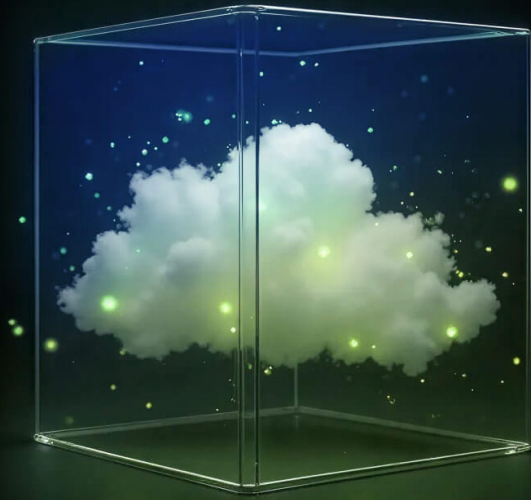
Optimizing infrastructure investments requires sophisticated modeling of demand patterns and network utilization, especially as exit pressures drive focus on maximizing ROI. Organizations must balance capacity expansion against aggressive cost constraints while maintaining service quality. Traditional planning approaches lack the predictive capabilities needed to justify and optimize investments across complex networks under intense financial scrutiny.

4 STRATEGIC ASSET OPTIMIZATION

Exit pressure drives the need for sophisticated asset utilization strategies and ROI optimization. Organizations must maximize value from existing infrastructure while strategically investing in high-return opportunities. Traditional asset management approaches lack the predictive capabilities needed to optimize infrastructure lifecycle decisions in preparation for potential exit scenarios.



THE WORLDSCAPE PLATFORM



UNIFYING THE DIGITAL AND PHYSICAL WORLDS

In an era where businesses face the data paradox generating unprecedented volumes of information while struggling to extract actionable insights, Worldscape offers a breakthrough solution. By seamlessly converting data into clear decision points, the platform delivers real-time decision advantage, enabling organizations to transform their data abundance from a challenge into a strategic asset. This real-time processing and visualization capability ensures that increased data volume becomes a catalyst for better decision-making rather than a barrier to it.

Worldscape's platform bridges the digital and physical worlds by enabling users to test and validate outcomes with empirical data at scale. The platform integrates data from across your business, empowering you with visualizations that reveal new insights. The ability to execute parallel simulations allows a deeper understanding of business operations and the comparable risks and opportunities of a full range of alternatives, and the real-world implications.

1 THE WORLDSCAPE PLATFORM

We integrate data, AI, and game engine technology in an open platform. Through the platform you can visualize your data with immersive experiences, model your business, and simulate and emulate potential outcomes. This enables you to train humans and AI through how we experience the real-world using 3D geospatial physics-based technologies, which simulate how we experience the real world.

2 WORLDSCAPE STUDIOS

Born from gaming innovation and battle-tested by technology giants, we bring unprecedented clarity to complex data challenges by driving. We've mapped the universe from the farthest star system down to the mud here on Planet Earth, all without breaking a sweat, so we do not doubt that we can unshackle your business from traditional data silos and unleash the potential of your business in all new ways.

EXPERIENCE YOUR BUSINESS IN A WHOLE NEW WAY

The Worldscape platform transforms insurance data into dynamic 3D worlds, enabling executives to step inside their operations and make real-time decisions as risks unfold. This isn't just visualization – it's immersive intelligence that reveals hidden patterns and vulnerabilities traditional systems can't touch. Physics-based modeling exposes the true impact of scenarios and disruptions across your business.

This paradigm shift crushes the competition. Run instant what-if scenarios, model multiple disruptions simultaneously, and see impacts unfold before your eyes. While others stare at static dashboards, you're navigating a living digital twin of your data, spotting risks and seizing opportunities with unmatched speed and precision.



THANK YOU

At Worldscape, we believe that the best way to predict an outcome is to simulate with empirical data at scale. We integrate data, AI, and game engine technology in an open platform. Our platform enables the creation of apps that provide immersive visualization of your data, predictive models, and unparalleled simulation capabilities, allowing you to experience your business in ways that have never been possible before.

Worldscape enables you to train humans and AI with experiences that precisely mirror the real world. Worldscape delivers real-time decision advantage, allowing for unprecedented insight into your business and the world.

CONNECT WITH WORLDSCAPE

CONTACT US

customers@worldscape.ai

OUR LOCATION

15809 Bear Creek Pkwy
Suite 130
Redmond, WA, 98052

ENTER THE WORLDSCAPE

Worldscape.ai

